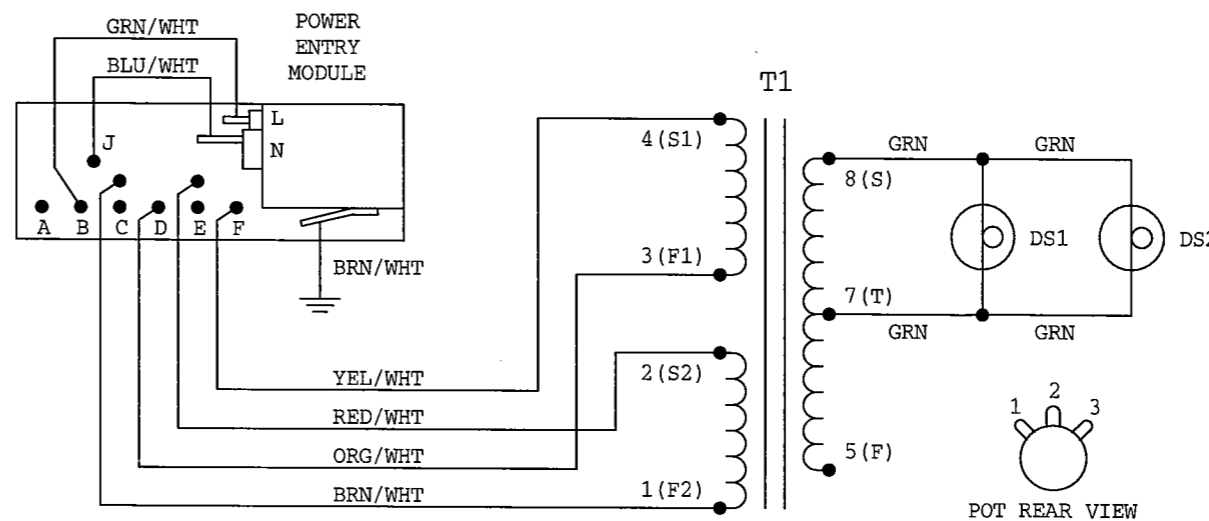
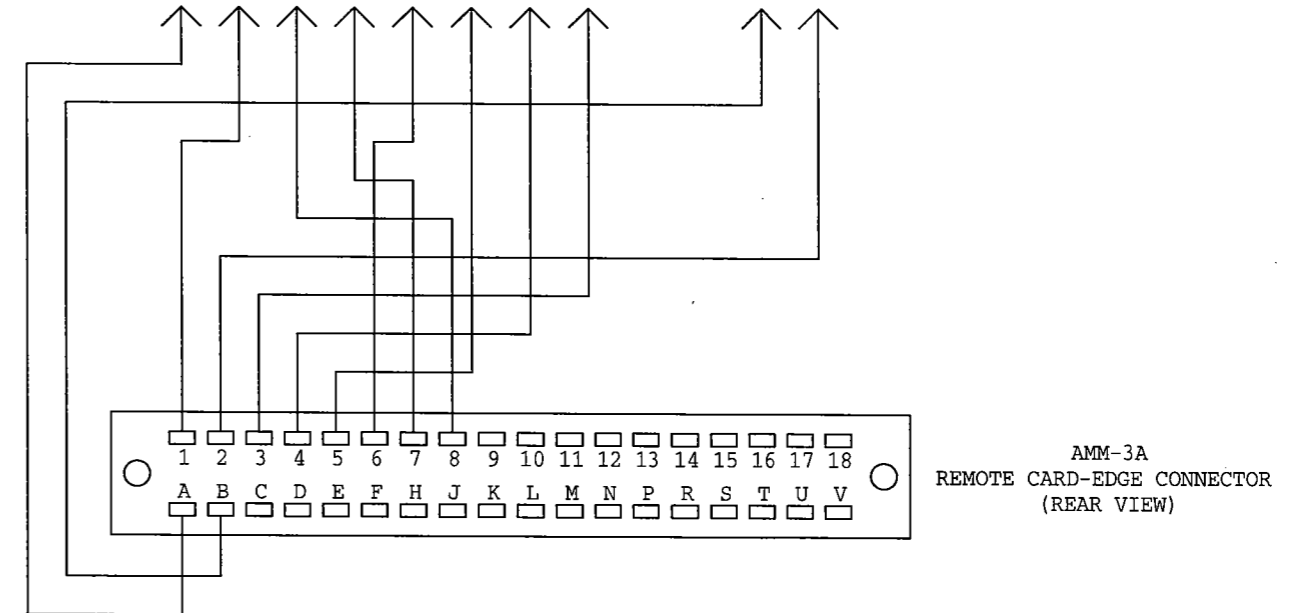


MP-7A CONNECTION NOTES FOR THE AMM-3A:

1. CONNECT THE MP-7A TO THE AMM-3A MONITOR AS SHOWN TO THE RIGHT. SEE THE MP-7A PARTS LIST SHEET FOR THE LINE VOLTAGE SELECTION PROCEDURE.
2. THE TOTAL LOOP (ROUND-TRIP) RESISTANCE FOR EACH OF THE REMOTE MODULATION METER CIRCUITS MUST EQUAL 10K OHM.
3. IF THE LOOP RESISTANCE OF THE MODULATION METER WIRE-PAIRS BETWEEN THE MONITOR AND THE METER PANEL ARE MORE THAN 3.2K OHM, SOLDER SHORTS ACROSS THE MODULATION METER SERIES RESISTORS R3 AND R11 (4.3K OHM). THE MAXIMUM ALLOWABLE MODULATION METER WIRE-PAIR LOOP RESISTANCE IS APPROXIMATELY 7.5K OHM (WITH R3 AND R11 SHORTED).
4. TO CALIBRATE: RELEASE THE AMM-3A "REMOTE" PUSHBUTTON AND DEPRESS THE "CAL" PUSHBUTTON AND NOTE THE NEGATIVE MODULATION READING ON THE MONITOR. DEPRESS THE "REMOTE" PUSHBUTTON AND ADJUST MP-7A POTENTIOMETER R9 FOR THE SAME READING ON THE NEGATIVE REMOTE METER. REPEAT THIS PROCEDURE FOR THE POSITIVE REMOTE METER USING POTENTIOMETER R1.
5. EACH AMM-3A PEAK LIGHT CIRCUIT IS DRIVEN BY A VOLTAGE SOURCE AND FOLLOWS OHM'S LAW.
6. SCHEMATIC SHOWS METER PANEL REAR VIEW.

MP-7A CONNECTION NOTES FOR THE AMM-3:

1. CONNECT THE MP-7A TO THE AMM-3 MONITOR AS SHOWN ABOVE. SEE THE MP-7A PARTS LIST SHEET FOR THE LINE VOLTAGE SELECTION PROCEDURE.
2. THE TOTAL LOOP (ROUND-TRIP) RESISTANCE FOR EACH OF THE REMOTE MODULATION METER CIRCUITS MUST EQUAL 7.5K OHM.
3. DISCONNECT THE MODULATION METER SHUNT RESISTORS R2 AND R10 (15K OHM). IF THE LOOP RESISTANCE OF THE MODULATION METER WIRE-PAIRS BETWEEN THE MONITOR AND THE METER PANEL IS MORE THAN 500 OHM, SOLDER SHORTS ACROSS THE MODULATION METER SERIES RESISTORS R3 AND R11 (4.3K OHM). THE MAXIMUM ALLOWABLE MODULATION METER WIRE-PAIR LOOP RESISTANCE IS APPROXIMATELY 5K OHM (WITH R3 AND R11 SHORTED).
4. TO CALIBRATE, SEE STEP 4 ABOVE.
5. EACH AMM-3 PEAK LIGHT CIRCUIT IS DRIVEN BY A VOLTAGE SOURCE AND FOLLOWS OHM'S LAW.
6. SCHEMATIC SHOWS METER PANEL REAR VIEW.



MP-7A  
REMOTE METER PANEL  
FOR THE AMM-3 SERIES OF  
AM MODULATION MONITORS  
BELAR ELECTRONICS  
5-25-99

## MP-7A PARTS LIST

Reference Designation	Description	Part Number
CR1	LED: RED T1-3/4	1910-0001
CR2	LED: YELLOW T1-3/4	1910-0002
CR3	LED: RED T1-3/4	1910-0001
CR4	LED: GREEN T1-3/4	1910-0003
CR5	LED: RED T1-3/4	1910-0001
DS1, DS2	LAMP: 755	2140-0005
--	SOCKET: LAMP	1450-0012
--	POWER ENTRY MODULE: 6J4	0360-0020
F1	FUSE: AGC 1/4A 250V	2110-0002
M1, M2	METER: MOD 0-133%	1120-0012
R1	R: VAR COMP 5k	2100-0008
R2	R: METAL FILM 15k 2% 1/2W	0771-1532
R3	R: METAL FILM 4.3k 2% 1/2W	0771-4322
R4 thru R8	R: METAL FILM 200 2% 1/4W	0751-2012
R9	R: VAR COMP 5k	2100-0008
R10	R: METAL FILM 15k 2% 1/2W	0771-1532
R11	R: METAL FILM 4.3k 2% 1/2W	0771-4322
T1	TRANSFORMER: DP 241-4-10	9100-0024
TB1	TERMINAL BLOCK: 12 SCREW	0360-0002
--	LINE CORD (115 Vac line voltage)	8120-0002
--	LINE CORD (230 Vac line voltage)	8120-0004

### MP-7A LINE VOLTAGE SELECTION PROCEDURE

1. Unplug line cord.
2. Open fuse compartment door.
3. Move fuse pull lever to left to remove fuse. Leave fuse pull lever in the leftmost position.
4. Using needle nose pliers, pull the voltage select board straight out of the power entry module.
5. While facing the rear of the unit, orient the voltage select board so the desired line voltage is up and reads correctly ("120" for 115Vac operation, "240" for 230Vac operation).  
 Note: The "100" and "220" positions on the opposite side of the board are not used.
6. Plug the voltage select board into the power entry module.
7. Install the fuse (F1).
8. Close fuse compartment door.
9. Plug line cord in.