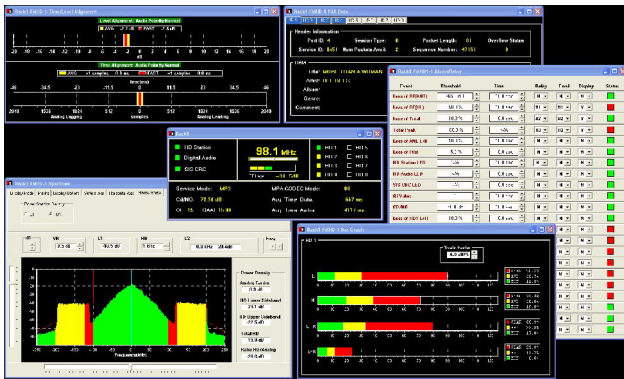




DESCRIPTION

The Belar **FMHD-1L** is a state of the art HD Radio monitor designed to support the needs of today’s broadcaster well into the future. The monitor decodes the HD Radio signal and analog FM signal simultaneously displaying HD Radio status, data, time alignment, and configuration information, as well as total, RDS, pilot, L, R, L+R and L-R metering and RF spectrums. The **FMHD-1L** currently supports monitoring multiple audio streams and simultaneous monitoring of two streams with the additional optional decoder installed.

In addition to an antenna input for monitoring off the air, the **FMHD-1L** has two high level RF inputs for transmitter site operation. The dual RF inputs allow for monitoring at installations using two transmitters to generate the combined Analog/HD signal.



The **FMHD-1L** has both RJ-45 10/100 Base-T Ethernet and USB computer interfaces which allow you to remotely access and control the **FMHD-1L** using the Wizard for Windows software. Various PC graphing and logging functions are available. The unit also provides 4 user assignable relay closures and email addresses used to indicate alarm conditions.

FEATURES

- Frequency Agile Antenna and High Level RF Inputs
- RF Spectrum Analysis with Mask and Sideband Power Measurements
- Metering of Analog Total, RDS, Pilot, L, R, L+R, and L-R
- Metering of HD Radio L, R, L+R, L-R Audio
- Support for simultaneous decoding of 2 HD audio streams.
- Time Alignment Graphic Display with Audio Polarity
- Level Alignment Graphic Display Analysis $\pm 20.0\text{dB}$
- HD Radio Control and Status Information
- HD Radio SIS and PAD Data
- BER (Bit Error Rate) Measurements
- Supports Belar’s Automatic Delay Correction Software Module

SPECIFICATIONS

RF Input

- Antenna Input 87.5 to 108 MHz frequency agile, 75Ω, F-Type Connector
- RF Inputs 87.5 to 108 MHz frequency agile, 1 to 10 Vrms, 50Ω, BNC Connector

Computer Interface

- USB Port
- Ethernet 10/100 Base-T RJ-45 Connector

Alarms

- Relays (4 Assignable) Form C, 15-pin D Connector

- Dimensions 19"x1.75"x14.5", (48.26x4.45x36.83 cm) 1 EIA Rack Unit
- Power Requirements 40 Watts, 90-264V, 47 to 63 Hz
- Shipping Weight 10 lbs (4.5 kg)
- Shipping Carton 22"x18"x6" (55.9x45.7x15.2 cm)

Specifications are subject to change without prior notice.



BELAR ELECTRONICS LABORATORY, INC.

1140 MCDERMOTT DRIVE, SUITE 105 • WEST CHESTER, PA 19380-4043 USA
 PO BOX 1689 • WEST CHESTER, PA 19380-0055 USA
 VOICE (610) 687-5550 • FAX (610) 687-2686
<http://www.belar.com/> • sales@belar.com • service@belar.com • parts@belar.com