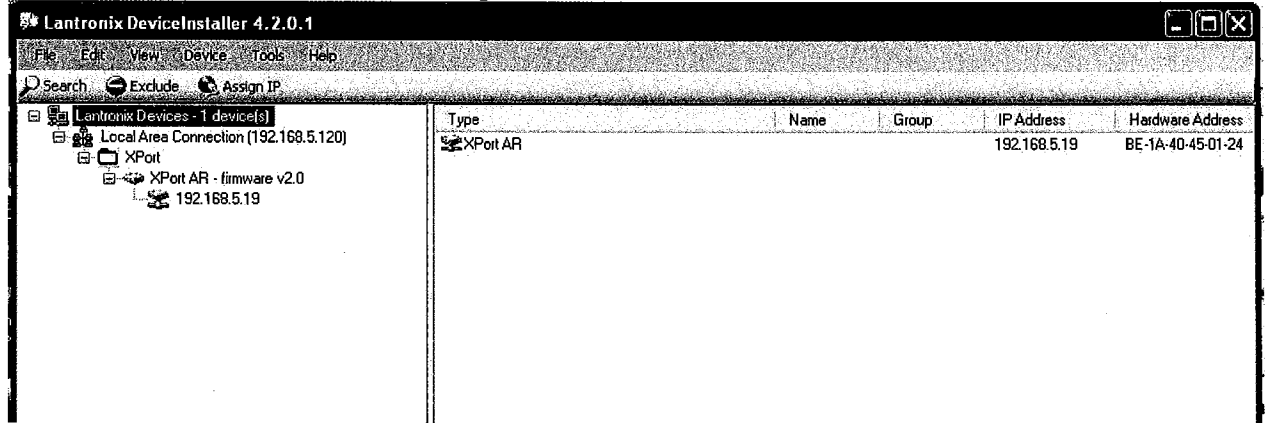


FMHD-1& FMCS-1

WizWin Software Setup and Unit Update information

- 1) If you have already successfully connected to the unit using the software and are attempting to update the unit firmware skip to step # 8. Or with an FMCS-1 you can use a 9pin serial null modem cable as an alternate connection method (if so connect the cable between your computer and the RS232 port on the back of the FMCS-1 and proceed to step 5).
- 2) Install the Belar WizWin software from the CD (dated January 2009 or later).
 - a) Install the Lantronix Device Installer Software from the software CD.
 - i) also available for download from Lantronix at: http://ltxfaq.custhelp.com/cgi-bin/ltxfaq.cfg/php/enduser/std_adp.php?p_faqid=644
- 3) **Connecting the Unit to your computer: (LAN/WAN Using RJ45 Network Jack)**
 - a) If connecting to a network with a DHCP server in place (the Unit is shipped with DHCP enabled) connect the Unit to your network, on the same subnet as the computer you loaded the WizWin software, and power cycle the unit.
 - b) If your network does not have a DHCP server the Unit will select an APIPA (Automatic Private IP Address) address in the 169.254.xxx.xxx range with a subnet of 255.255.0.0 You can then use an isolated (non DHCP) switch or a crossover cable to connect the FMHD-1 to your computer.
 - i) You must set the computer IP to the same 169.254.xxx.xxx range with the 255.255.0.0 subnet. (Most computers set to DHCP enabled will default to an APIPA address if no DHCP server is present when they are booted up).
- 4) To Obtain the Units IP address with the FMCS-1 open the units setup and configuration menu and go to the "settings" > "Network" submenu to display the current network information. With the FMHD-1 follow a, b, and c below
 - a) Open the Lantronix Device Installer program.
 - b) In the left hand column you will see the IP address assigned to the XPORT-AR. If you already have the Device installer program running click the "search" function at the top left. Note the IP address assigned to the XPort AR device (this is the FMHD-1's imbedded network device)

Write the address down, in the example it is 192.168.5.19



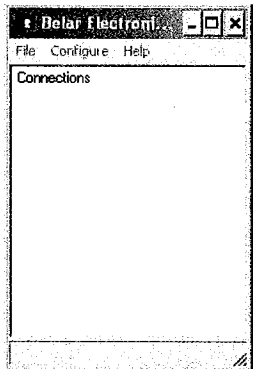
c) If your FMHD-1 is connected to a DHCP active network you may also obtain the IP address from the DHCP server lease list. Units will either have a DHCP Client name of "FMHD450xxx" where xxx is the last three digits of your units serial number or will show a MAC address of BE:1A:40:45:0x:xx again with the x:xx being the last three digits of the unit serial number.

d) *If you wish to set a static IP please see the "Setting a Static IP address for the Belar*

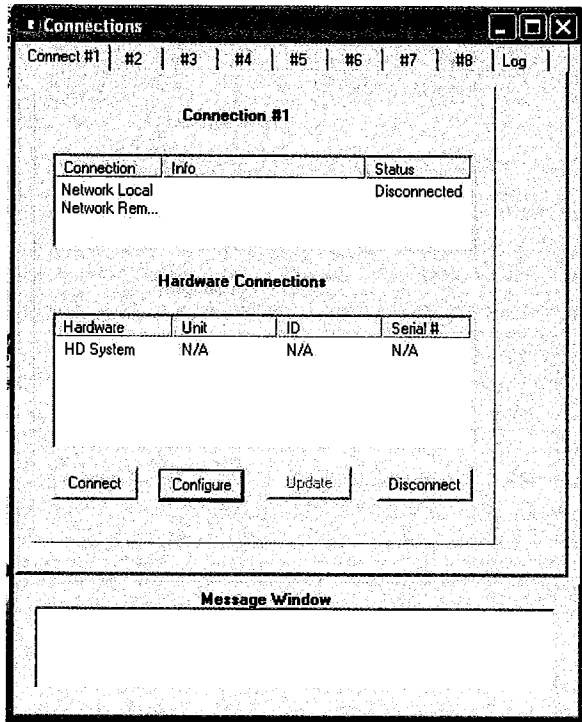
FMHD-1" supplement. To set a static IP on the FMCS-1 please contact Belar support at 610-687-5553.

5) 7) **Run the WizWin software:**

a) Select "Connections" from the window:

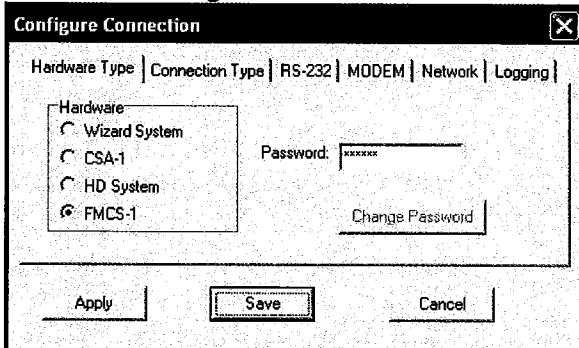


A pop-up dialog box will appear. Select Connection #1 and click the "Configure" Button.

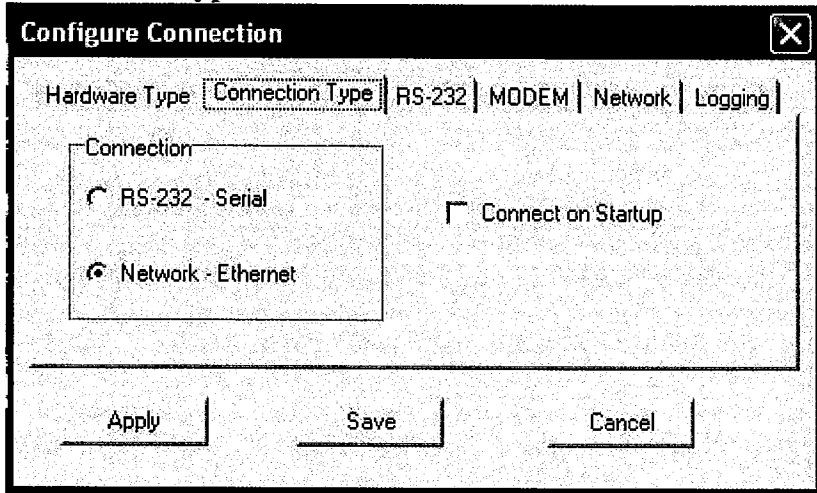


Under the individual Tabs in the Configure Dialog Box enter the following information.

- b) **Hardware Type:** HD System or FMCS-1 (basic or complete) (The Password {belar3} is preset and should not be changed at this time)

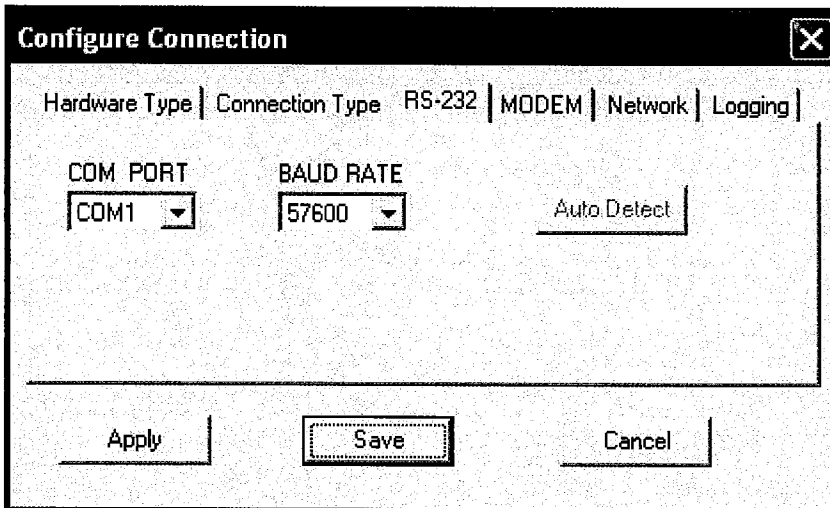


c) **Connection Type: Network – Ethernet**



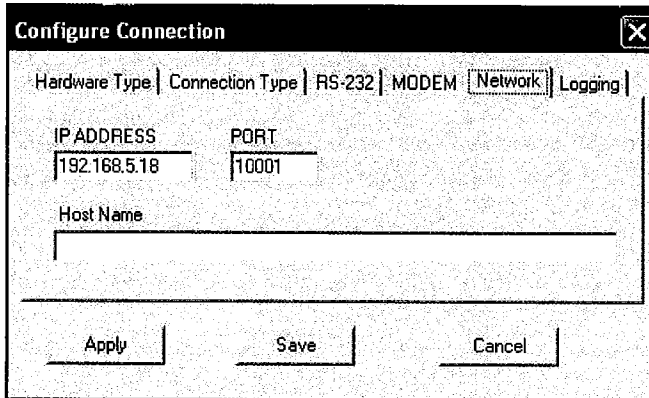
d) **RS-232 (FMCS-1 ONLY)**

If using the serial connection on the FMCS-1 check the appropriate option, then select the RS-232 tab, select the appropriate “Com Port” and set the “Baud Rate to 57600. Click “Save” or “Save” to save and close the “Configure Connection” dialog box

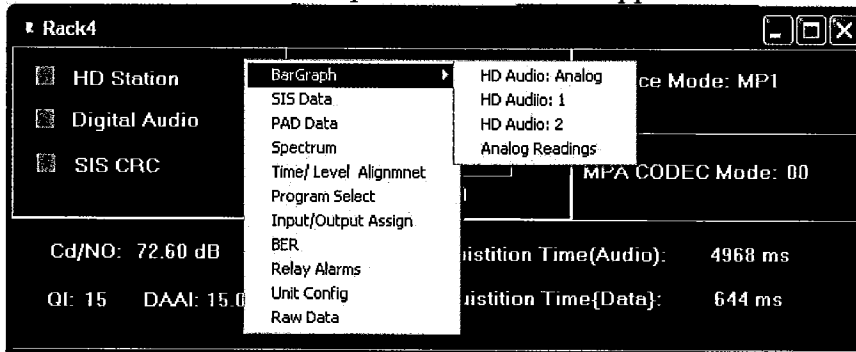


e) **Network:** IP Address of the Unit obtained from the Lantronix Device Installer program, or from the setup menu of the FMCS, or from your DHCP server lease list.

- i) **Port:** 10001 (if you're using the Belar Server Program the IP address will be the address of the hosting computer and the port will be set between 81 and 88 to correspond with the listening port set in the Server Program) Host name can be left blank



- 6) Click the “Save” button
- 7) Click on the “Connect” button in the Connections Window. The Unit should connect and bring up a virtual front panel of the Unit. ***{The screen navigation portion of this manual applies only to the FMHD-1. The release of the interactive portion of the Wizwin software for the FMCS-1 is pending release.}***
- a) **You can navigate around the unit controls** by right clicking on the unit and selecting screens and functions from the drop down menus that appear.

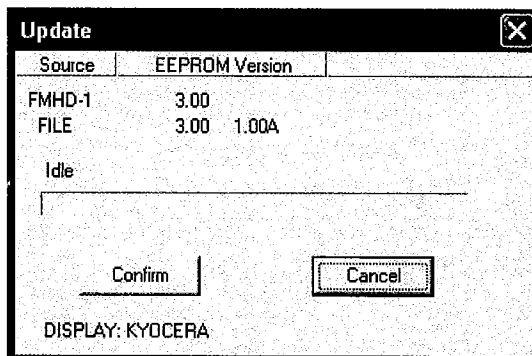
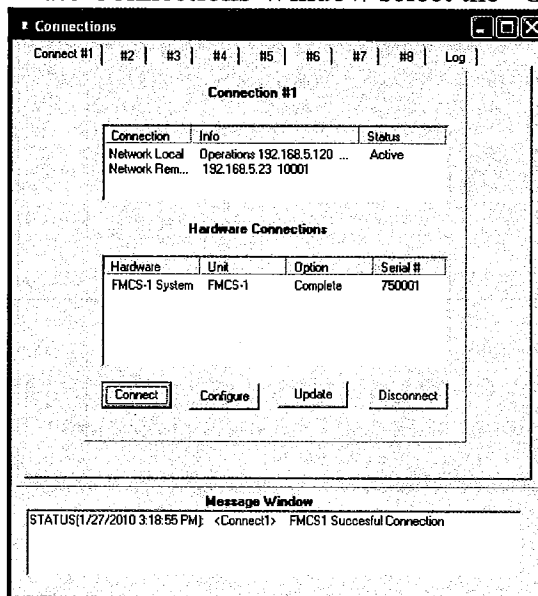


- 8) If your WizWin software ***is not*** Version 3.3 Dated 01/08/10 contact Belar at 610-687-5553 to obtain an updated copy

The update file is embedded in the WizWin software. By default it can be found in the C:\Program Files\Belar Electronics\Belar Wizard for Windows\DLD folder and will be named “FMHD1_HAN.DLD” or “FMHD1_KYO.DLD” or FMCS1.DLD

Caution: Older versions used a file named “FMHD1.DLD” those versions should not be used to attempt unit upgrades to the FMHD-1

- a) In the Connections Window select the “Update” button. A Dialog Box will pop-up.



- i) If your unit is not field upgradeable (versions below 2.15) a warning will appear and the unit must be returned to Belar for updating.
- ii) If you are attempting to install a firmware version older than or equal to your current version a warning box will appear.
- iii) If you're upgrading to a new version you will see a box listing the existing version and the update version and asking you to confirm the Update. Select the “Confirm” button.

- 9) The front panel of the Unit will show the updating progress which takes about 20 minutes to complete. Afterwards the unit should reboot automatically. **DO NOT INTERRUPT THE UPDATE PROCESS AFTER IT HAS STARTED**

- 10) *To communicate with the Unit you must use the WizWin program* either directly or through the Belar Server (for multiple network connections - see separate Belar Server setup instructions). Attempting to use the IP address in your Web Browser, such as Internet Explorer, will bring up a log on box for the Lantronix embedded Xport AR